

Classics & Ancient History

Pre-Application Open Days:
13-14 June 2025

Dr. Chris de Lisle

Who are we?

Boasting

9th in the 2025 QS World University Rankings

3rd in the UK in The Times Good University Guide 2025

4th in the UK in the Complete University Guide 2025

4th in the UK in REF2021 (overall research quality)

Overall student satisfaction in NSS consistently 90%+



Who are we?

- Large, international Department (incl. UK, USA, New Zealand, Australia, Greece, Italy, The Netherlands): 27 permanent members of staff and currently 4 teaching fellows, dedicated administrative and support team
- ca 360 undergraduates (on all our programmes)
- ca 40 MA students
- ca 30 PhD students

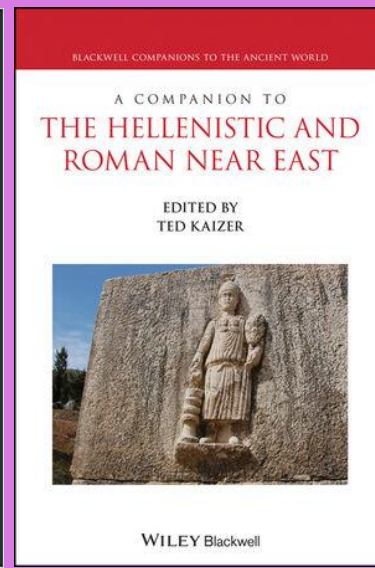
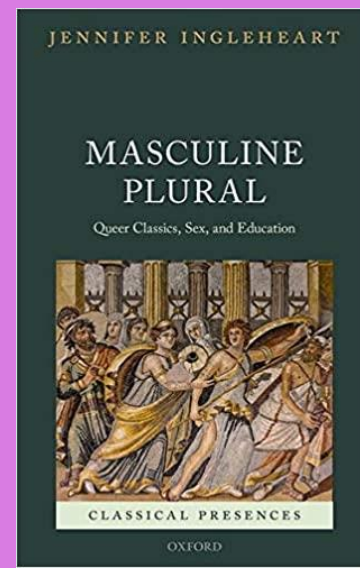
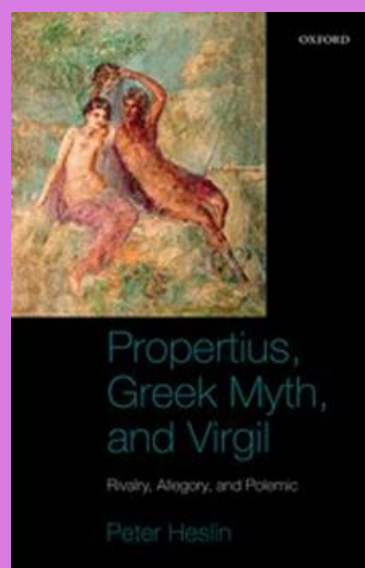
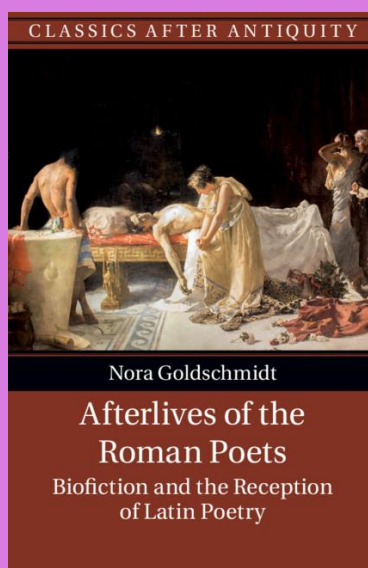
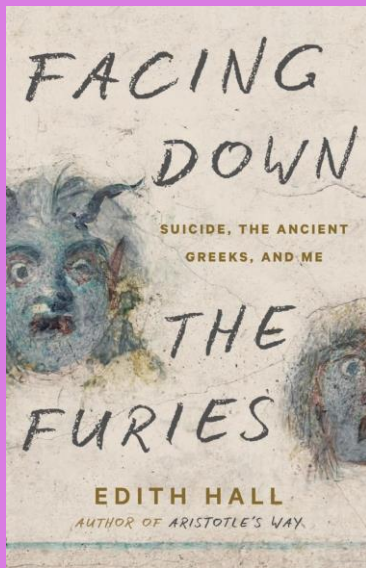
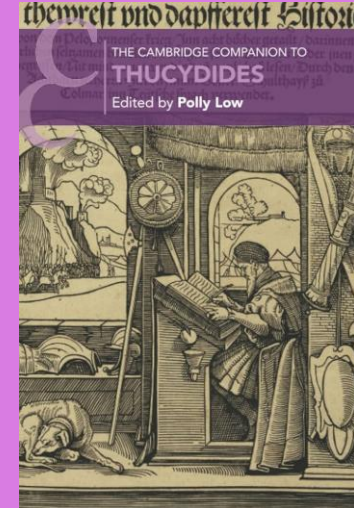
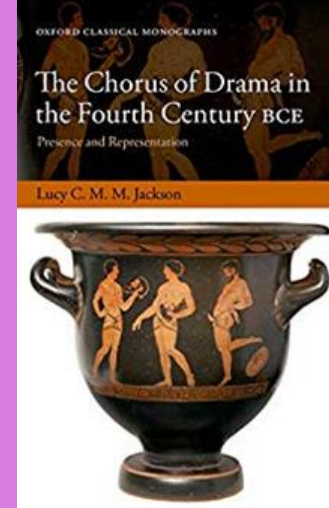
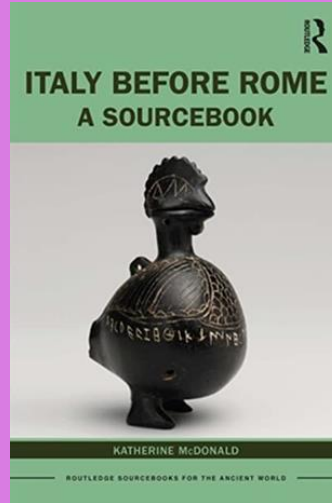
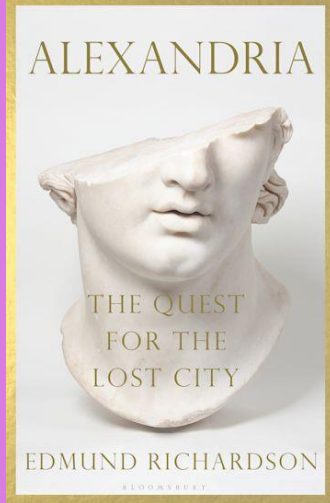
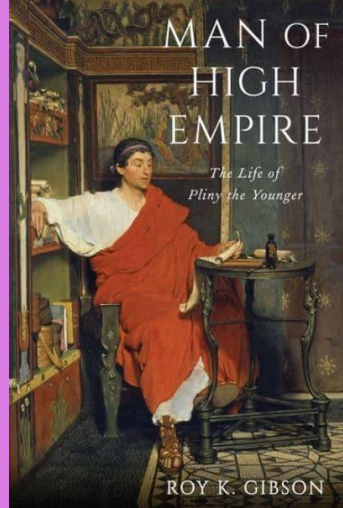




What do we do?

- **Languages and literature:** Latin and Greek; Syriac and Near Eastern literatures (original and translations)
- **History:** social, political, economic history; history of sexuality; epigraphy and numismatics – from Britain to Afghanistan, from 1800 BCE to 700 CE
- **Philosophy:** Ethics, aesthetics, physics, and metaphysics from Egypt to Late Antiquity
- **Material culture:** Ancient art and architecture; objects in daily life
- **Reception:** Classics in literature, art, and life from the Middle Ages to today; performance studies; thinking about museums and heritage; digital Classics





Location

- 38 North Bailey: 3 listed buildings (37-38 North Bailey & 1 Dun Cow Lane): Departmental Office, staff offices, Departmental library, 2 seminar rooms
- Lectures either on Palace Green (Pemberton building) or in Elvet Riverside





Facilities

- Not only the main University Library: Bill Bryson Library
- But also our own Departmental Library
- University museums



Our programmes

Programmes

- 3 Single Honours:
 - Classics (Q801): language(s) compulsory
 - Classical Civilisation (Q820): language(s) optional
 - Ancient History (V110): language(s) optional
- 2 Joint Honours:
 - Ancient, Medieval & Modern History (V101)
 - Ancient History & Archaeology (VF14)
- All programmes last three years, and they all have an option to extend to four years with year abroad or placement year.



Entry requirements

- Classics, Classical Civilization, Ancient History
 - A-level offer: AAA
- Ancient, Medieval & Modern History
 - A-level offer: A*AA
- Ancient History & Archaeology
 - A-level offer: AAB



Module choices

- **Year 1:** focus on a smaller number of **core modules**, setting the foundation for further study
- **Years 2 and 3:** increased choice, increased specialization
- **Year 3:** Dissertation (guided independent research topic)
- You can see *all* our modules at:
<https://apps.dur.ac.uk/faculty.handbook/2024/UG>
(NB not all modules are taught every year)



Year 1 module choices

- 6 modules (or 5 with beginners' language)
 - Introduction to the Greek World
 - Monuments & Memory in the Age of Augustus
 - Latin and Greek language modules
 - Early Greek Philosophy
 - Language, Translation, Interpretation
 - Lives of Objects
 - Empire and Religion in the Age of Constantine
 - Modules offered by other departments



Languages: Latin and Greek

- If you have **little/no previous experience**: start at **Beginners**; progress to **Intermediate & Advanced**.
- If you have **A-Level** (or equivalent): start at **Intermediate**; progress to **Advanced & Higher**.
- You can study **only Greek** or **only Latin** or **both languages**
- **You cannot study both Beginners' modules in the same year**
- Language study (Latin and/or Greek) is *compulsory* on BA Classics, and available as an *option* on all other programmes.



What do language courses involve?

- **Beginners' Level:** intensive introduction to the language, taking you to A-level standard in one year
- **Intermediate Level:** consolidation of grammar; two short set texts (prose & verse)
- **Advanced and Higher Levels:** reading & interpretation of Greek or Latin texts, prose or verse (or a combination). Assigned texts change regularly; we aim to offer a **range** of texts.



How are language modules taught & assessed?

- **Beginners:**
 - **Teaching:** 4 hours/week
 - **Assessment:** 2 x exams
- **Intermediate:**
 - **Teaching:** 4 hours/week (reading & grammar classes)
 - **Assessment:** coursework (essay) + exam
- **Advanced & Higher:**
 - **Teaching:** 2 hours/week (reading classes & seminars)
 - **Assessment:** coursework (essay) + exam



Teaching



Studying with us: teaching, learning, assessment

- Teaching is a mixture of **lectures**, **seminars** (small groups) and (where relevant) **language classes**
- Most students will have **eight-ten contact hours per week** (in **22 teaching weeks**, over **three terms**)
- **Assessment** is by essays; commentaries; examinations (including 'open book' examinations); presentations; artistic reconstructions...



Our Teaching Ethos

- Variety of theoretical & methodological perspectives: there is a strong sense of tradition, but also a commitment to innovation & new approaches
- Diversified assessment: we look for new and better ways to assess our students that play to their strengths and encourage independent thinking
- Students are encouraged to discover own responses to material, ideas, questions encountered



Employability (source: <https://discoveruni.gov.uk/>)

- According to the latest data, around 89% of our students go on to work or further study within 15 months of graduation
- The greatest proportion of those who are in employment 15 months after graduation work in business, finance, and administration



Careers service

Study	Colleges & student experience	Research & business	Alumni	Global Durham
Careers & Enterprise Centre				
You are in: Durham University → Careers & Enterprise Centre → Supporting Students				

Careers & Enterprise Centre

Supporting Students

Plan Your Future Career

Develop Employability Skills

Meet Employers on Campus

Explore New Business Ideas & Develop Enterprising Skills

Search and Apply for Jobs & Work Experience

Open Days / Visit Days

Supporting Students



Plan Your Future Career



Develop Employability Skills



Meet Employers on Campus



Be Enterprising



Search and Apply for Jobs & Work Experience



Thinking About Coming to Durham

[Tweets by @careersatdurham](#)



Access the Student Services Portal

 Find us on Facebook

 @careersatdurham

Related Links

[Information for Student Brand Ambassadors](#)

[Student Employability Fund](#)

[Competitions and Awards](#)

[Give Us Your Feedback](#)



Why choose Durham

Department Features

Tradition & Innovation

Course Features

Flexibility; you can start languages from scratch, develop existing skills, or focus on non-linguistic studies.

Versatility

A 360-degree view of the ancient world, from literature to material culture.

Placements

The opportunity to acquire meaningful work experience.

Year Abroad

The opportunity for a different university experience.

Alumni Successes

High employability



For more information

- Our website: durham.ac.uk/classics
- Admissions website: durham.ac.uk/study
- Follow us on bluesky! [@durhamclassics.bsky.social](https://bsky.app/profile/durhamclassics.bsky.social)
- Ask Us: www.durham.ac.uk/study/askus/
- Admissions Enquiry Telephone: 0191 334 1000

