

**Read more about  
studying  
Geography at  
Durham**



**Be Curious.  
Be You.**



# Geography@Durham Lab Tour Schedule

**10:50**

**11:20**

**12:10**

**12:40**

**13:30**





# Department of Geography Durham University

# Welcome to Durham Geography!

- Why Geography?
- Why Durham?
- Our values
- Degree Structure
- Fieldtrips, Teaching & Support
- Careers
- Q&A





# Geography: Tackling the Big, Global Challenges

- Climate change
- Migration & displacement
- Violent conflict
- Social inequalities



# Geography: Tackling the Big, Global Challenges

- **Doing it differently:**
  - Combining earth science, social science, creative methods
  - An interdisciplinary discipline (partly because it had to re-invent itself!)





# Why Durham?

- **Stature:** Founded in 1928, and currently the largest in the world
- **Prestige:** Consistently ranked as one of the best geography departments in the world

Ranked  
Joint 1st  
Nationally

REF 2021 based on  
GPA

1st for  
Geography

1st for Geography  
in the The  
Times/Sunday  
Times Good  
University Guide  
2025

Athena  
Swan

Silver Award in  
Gender Equality

11th

QS World  
University Rankings  
by Subject 2025



# Why Durham?



**DenCity** (Prof Colin McFarlane):  
living closely together at a time of  
urban crisis



**Durham Arctic Centre** (Prof. Phil  
Steinberg): climate change, ice  
processes & ecological communities  
in the north



**Cyberspace Ethics** (Prof. Louise  
Amoore): the politics of algorithms  
and their social impact



# Why Durham?



**Earthquakes without frontiers**  
(Prof Alex Densmore): increasing resilience to seismic hazard in the continents



**Biomarkers** (Prof Erin McClymont): Testing new organic geochemistry (biomarker) proxies for past environmental change



**Remote sensing glaciers** (Prof. Chris Stokes): Measuring and monitoring the response of glaciers to recent climate change

# Learning Guided by Values

1. Tackling challenges
2. Fostering curiosity
3. Nurturing passion

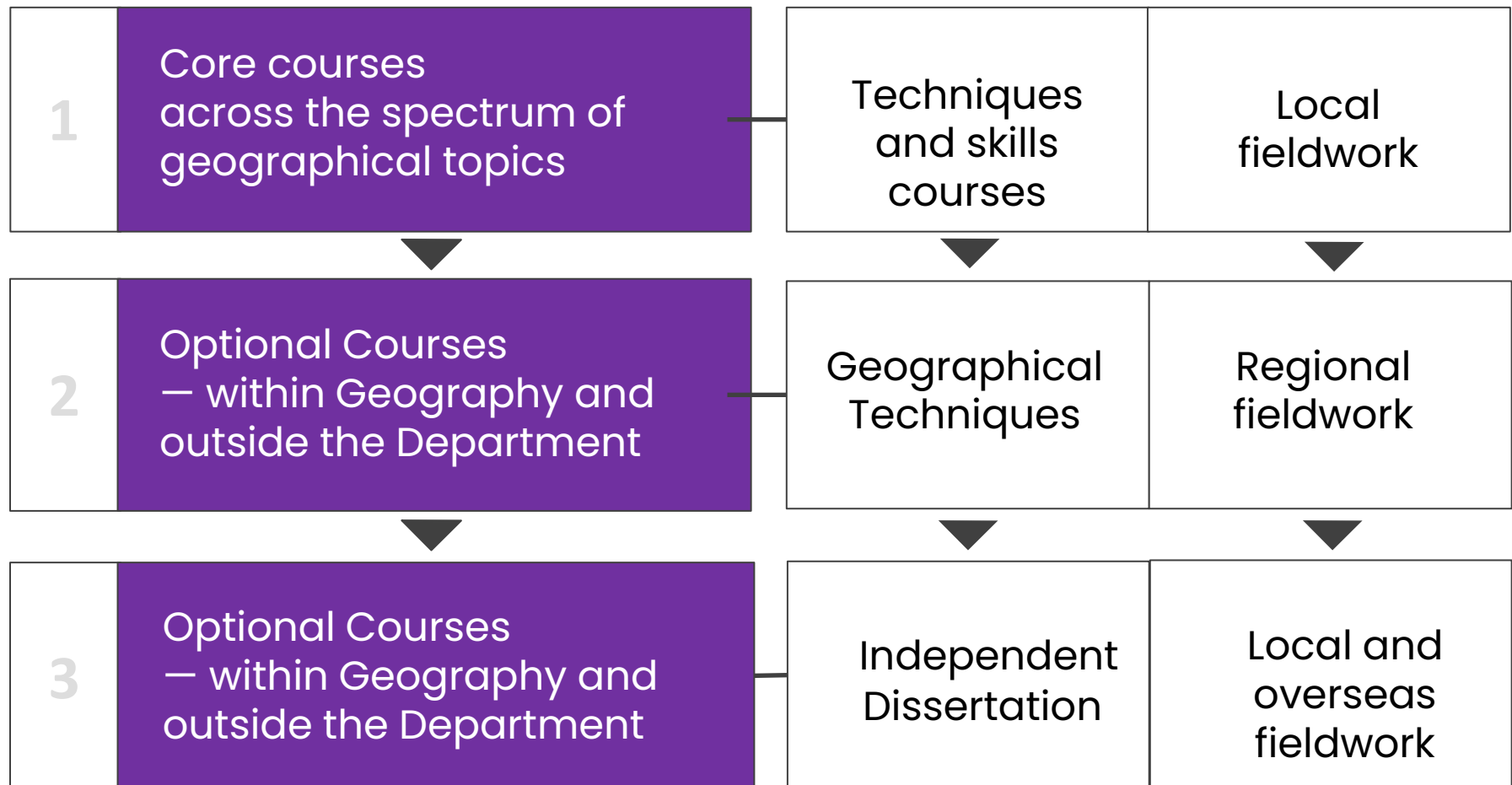




# Our degree map...

## Academic Courses

## Skills Spine



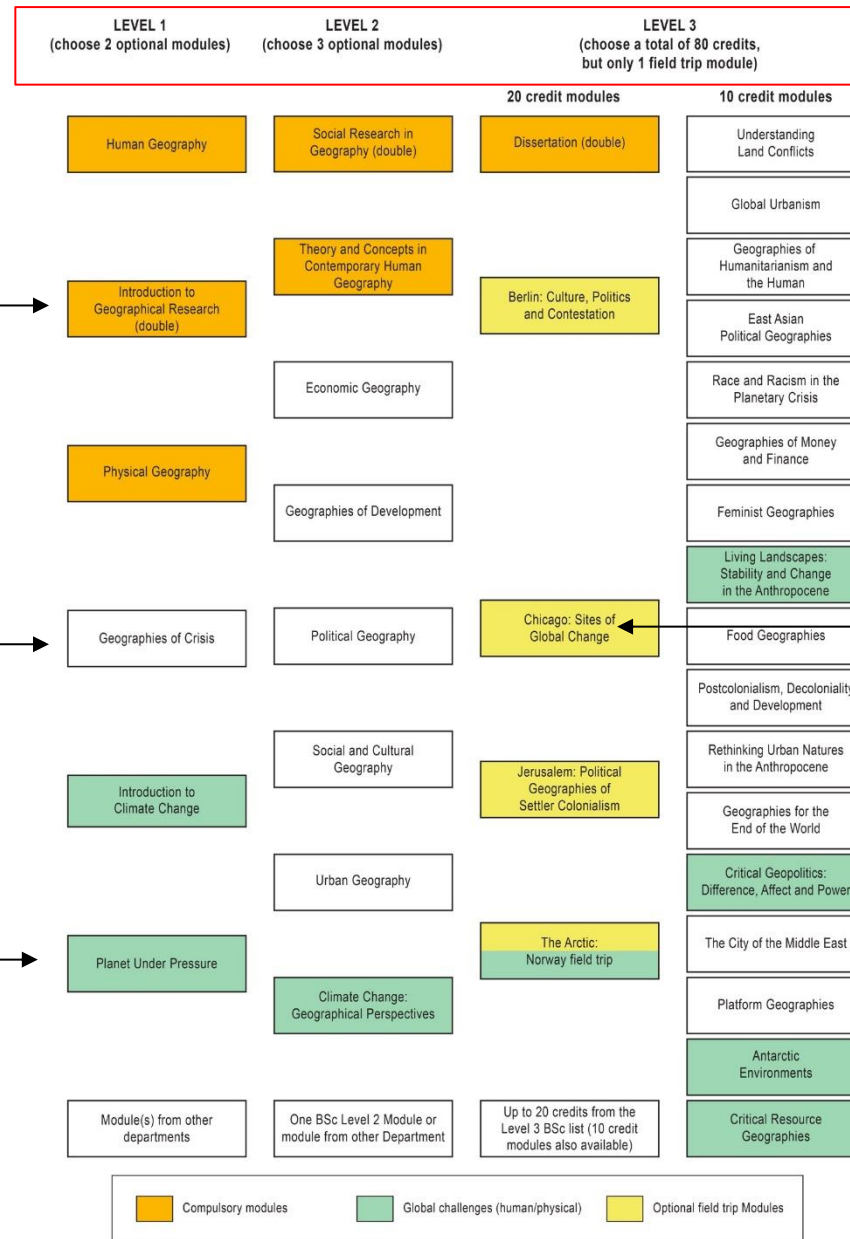
# BA Geography

Compulsory  
'core' modules

Human Geography  
options

Global challenge  
modules  
(Human / Physical)

Year of study



Optional field  
trip modules



# BSc Geography

Year of study

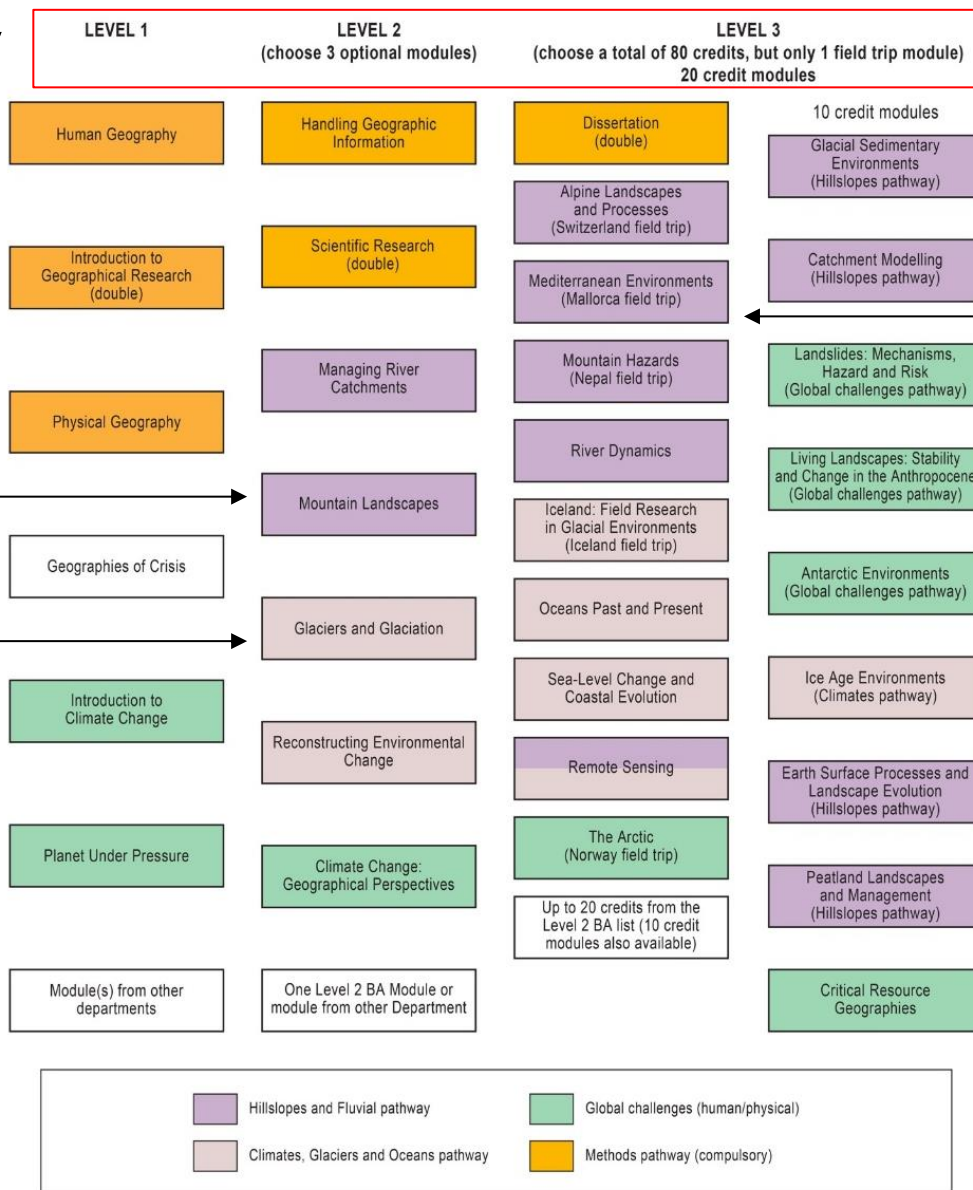
Compulsory  
'core' modules

Hillslopes &  
Fluvial modules

Climates, Glaciers  
& Oceans modules

Global challenge  
modules  
(Human / Physical)

Optional field  
trip modules



# Typical Week for L1 Student

	Monday	Tuesday	Wednesday	Thursday	Friday
9-10 am	PG (Lec)		IGR (WKSP)	Essay / Project writing	
10-11	Study skills	HG (Lec)			Group work meeting
11-12			Reading library		
12am- 1pm	HG (Lec)	PG (Lec)			
1-2 pm	Reading library	Research library	HG (Tut)		
2-3			University & College sport	Essay / Project writing	CRISIS (LEC)
3-4	PUP (LEC)	CRISIS (W)			
4-5					
5-6		IGR (LEC)			





# Our Pedagogy: Research-Led Teaching

- We teach our students at the research frontier (class-based modules)
- Students learn by undertaking research of their own (field research and field trips)



# Research-led Teaching: Level 1



BA Students – 2 x day  
trips to Newcastle



BSc Students – 3-day residential  
trip to Teesdale



# Research-led Teaching: Level 2

Skye, Lake District (BSc)



Glasgow, Liverpool, Bristol (BA)

# Research-led teaching

## Teaching: Level 3 (BA)

Chicago: Sites of Global Change



Territory & Geopolitics:  
Jerusalem



# Research-led Teaching: Level 3 (BSc)

Glacial Environments: Iceland



Mountain Hazards: Nepal



# Research-led Teaching: Level 3



# Contact & Support

Learning Activity	Class size	
	L1	L3
Lecture	280	30 - 145
Seminar	15	15
Tutorial	8	8
Personal tutor/Dissertation Supervisor	1-to1	

# Skills & Assessment

- Diverse forms of assessment, building diverse skillsets
  - Dissertation (examples on display)
  - Lab reports
  - Policy papers
  - Visual essays
  - Podcasts
  - Posters (examples on display)
- Assessment as transferable skill: Taking pride in our work!
- Recognising learning styles and career paths





# Fair Access & Widening Participation



- We celebrate our diversity!
  - Contextual admissions
  - First generation networks
  - Internationalisation
- Fostering inclusive learning environments:
  - Personal guidance, tailored programme
  - Accessible classrooms
  - Supporting your needs through the degree

# International Study Opportunities

- Durham collaborates with 30 universities globally



The University of Hong Kong



Mexico Finland Hong Kong  
China Taiwan  
Canada  
Australia  
Switzerland Italy  
Sweden Netherlands Argentina  
Austria Japan Spain  
Germany Thailand Singapore  
New Zealand Romania

# International Study Opportunities

Academic Year	# Students
2022/23	17
2023/24	19
2024/25	10
2025/26	14



# Geography with Placement Year

- Placement Year is taken between the second and third year, extending the degree by 12 months.
- A minimum of 40 weeks, 35 hours per week (must be approved by the University)
- You can do 1 placement, or up to 3 (minimum 4 months = 16 weeks each)
- Does not have to be connected with your degree content
- Most are paid

2019/20 = 1 student (first year)

2020/21 = 5 students

2021/22 = 15 students

2022/23 = 14 students

2023/24 = 33 students

2024/25 = 14 students

2025/26 = 13 students +

# Geography with Placement Year

**EU Aid Volunteers**

We Care, We Act



Unilever

L'ORÉAL

ICMM

International Council on  
Mining & Metals

SAMSUNG



Civil Service



Durham  
University

# Our Graduates

- 88% of Geography graduates in employment or further study within 15 months of graduating
- Median annual salary for undergraduate in full-time employment is £29,000 within 15 months.





# Employment & Careers

McKinsey  
& Company



Department  
for Environment  
Food & Rural Affairs

 **accenture**

**Deloitte.**



Ministry  
of Defence

**BlackRock**



Durham  
University



Save the  
Children

**B B C**



National  
Trust

**nesta**   
Challenges

# Admissions

## What our selectors consider

- Prior and predicted grades
- Personal Statement
- Teachers/Academic Reference
- Contextual evidence of merit & potential
- Motivation for the degree programme
- Study & other skills

Find out more by attending 'Applying to Durham' session TLC042 in the Teaching and Learning Centre or visit the Admissions Desk in the Teaching and Learning Centre



# College Allocation and Preferences

- ⑩ Your college is NOT linked to your degree subject
- ⑩ Before we allocate your college, you will be invited to rank the colleges in the order of your preference
- ⑩ You will be allocated your college around May

To find out more visit the Colleges Hub on the top floor of the Teaching and Learning Centre



**Read more about  
studying  
Geography at  
Durham**



**Be Curious.  
Be You.**

