

# Your Guide to Colleges







## Contents

### 04 Our extraordinary colleges

The college experience

### 06 College locations

In the heart of a vibrant city

### 08 Catered colleges

Collingwood College  
Grey College  
Hatfield College  
St Aidan's College  
St Chad's College  
St John's College  
St Mary's College  
Trevelyan College  
Van Mildert College

### 12 Self-catered colleges

College of St Hild and St Bede  
George Stephenson College  
John Snow College  
Josephine Butler College  
South College  
Ustinov College  
(Postgraduate only)

### 15 Mixed-catered colleges

St Cuthbert's Society  
University College (Castle)

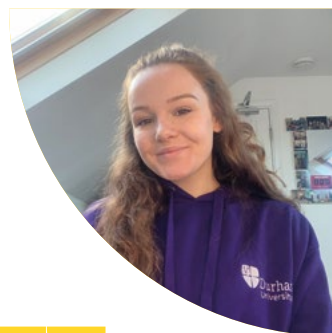
### 16 College tours on Open Day

### 16 Accommodation charges

Costs for 2022/23

### 16 How to apply

Understanding the process



The collegiate system was a big draw to Durham for me - the idea of having a ready-made community to come into made me feel far more comfortable with making the jump to university!

**Eleanor Ivy**  
Modern Languages





# Our extraordinary colleges

Our collegiate system makes Durham exceptional. Here, every student is a proud member of a college, and every college has its own character, spirit and traditions. Each is an inspiring and supportive community.

## College life

The colleges are the heart of our extraordinary wider student experience. We guarantee an offer of accommodation to all first year undergraduates who apply for it, because colleges are where Durham's outstanding student experience begins.

Colleges are extended communities. They create opportunities for each student to embark on their journey. We expect to create an environment which is safe, supportive and inclusive. It can be easy to feel overwhelmed starting university, but in your college, you'll be surrounded by friendly faces and you'll have the chance to get to know all sorts of extraordinary people.

Your college has its own Student Support Office, acting as a point of contact for any welfare and pastoral support you might need during your time here.

## What is college accommodation like?

The rooms and bathrooms will differ depending on the college, but all of our bedrooms are equipped with:

- A bed, desk, chair, wardrobe and drawers
- WiFi access with the ability to create a local wireless network for your devices
- Full catering, part-catering or self-catering facilities like a shared pantry or kitchen
- En-suite or shared bathroom facilities.

## The college experience

In your college, you can take part in sport, music, theatre or volunteering. You can join clubs and societies, enjoy social events and dinners, and make friends for life. Your college will be your home from home, the centre of your life at Durham and a constant source of opportunities, challenges and the making of memories.



## Every college provides:

- A character and spirit all of its own
- Sports, clubs, societies and associations
- Events and activities
- Student Common Rooms
- Staff and support close at hand if you need it
- Accommodation, either catered, part-catered or self-catered
- Colleges offer facilities such as shops, cafes, bars, libraries, social and study areas, music and performance spaces, laundrettes, gyms and outdoor sports areas depending on college.

## Discover new ideas

A Durham education doesn't stop with your degree subject. There are opportunities across the University to engage with ideas and learn from others. For example, in your college you might discuss the most pressing global issues with inspiring visiting speakers; you might go

along to a dissertation 'open mic' night where your fellow students share their research; or you might edit a student scholarly journal.

The University's award-winning museums offer awe-inspiring exhibitions, ranging from Ancient Egypt through medieval Durham to modern art; and its departments and research institutes host public lectures on cutting-edge research.

## An inspiring place to live and learn

In your college, you'll be surrounded by all sorts of different people, studying a wide range of subjects. So you'll meet people who share your interests, and others who'll inspire you to develop new ones.

Each college includes students from all levels of study, from

newly arrived undergraduates to Master's and PhD students. They're strong, supportive, multi-generational communities.

There are 17 colleges in total, including Ustinov, our postgraduate only college. Each offers a wide range of facilities for your University life. That means 17 times as many opportunities to develop your team-working, leadership and problem-solving skills. And 17 more chances to get involved in sports, societies, music, arts, associations, and committees.

No two colleges are the same – their architecture and settings are as distinct as their histories and traditions. One thing every college has in common, however, is its commitment to offering support, challenge, participation, teamwork, and leadership opportunities. All of our colleges embrace the UN's 17 Sustainable Development Goals.



**"Colleges are close-knit and supportive communities, with plenty of great events to attend and societies to be a part of!"**

**Anitej Banerjee**  
Mathematics

## College locations

Our colleges are located throughout Durham City, close to the main Mountjoy site, the River Wear and the city centre. We sometimes refer to certain colleges as “Hill colleges”, a group of colleges just to the south of Durham City and 5-10 minutes walk from the main Mountjoy site, the Bill Bryson Library and the Teaching and Learning Centre. The Hill colleges are around a 10-15 minute walk to the city centre.

Or we have our “Bailey colleges”, which are located in the historic city centre of Durham, around the River Wear peninsula called the Bailey. Bailey colleges are close to the Elvet Riverside lecture theatres, Students' Union, Palace Green and Durham Cathedral. The main Mountjoy site is a 10-15 minute walk away.

Durham is a relatively small and compact city. Each college is within walking distance of the city centre, academic departments, research institutes and University facilities.



SCAN ME

Find out more about our colleges

## Colleges at a glance

	Collingwood College	Grey College	Hatfield College	John Snow College	Josephine Butler College	South College	St Aidan's College	St Chad's College	St Cuthbert's Society	St Hild & St Bede	St John's College	St Mary's College	George Stephenson College	Trevelyan College	University College	Van Mildert College	Ustinov College (PG only)
Year of foundation	1972	1959	1846	2001	2006	2020	1947	1904	1858/88	1839	1909	1899	2001	1966	1832	1965	1965
Self-catered (S) Catered (C), Part-catered (P) (Undergraduate)	C	C	C	S	S	S	C	C	CSP	S	C	C	S	C	SC	C	X
(Postgraduate)	C	S	S	S	S	S	C	S	S	S	C	C	S	C	S	C	S
Gowned formal dinners*	No	Yes	Yes	Yes	Yes	No	No	Yes	No	No	Yes	Yes	No	Yes	Yes	No	No
Total number of students living in (UG & PG)	555	463	412	496	556	496	386	249	470	336**	259	314	433	320	538	524	460
Total number of undergraduate rooms	522	401	360	412	505	414	305	195	413	TBC**	233	292	372	272	97	442	0
Total number of postgraduate rooms	42	60	48	50	46	70	80	54	92	90**	0	10	39	48	128	14	364
Total number of full time student members	1,565	1,276	1,376	708	1,315	1,023	1,196	549	1,411	1,336	613	892	898	894	1,313	1,420	1,322
Chapel/ Multifaith room	No	Yes	Yes	No	Yes	Yes	Yes	Yes	No	Yes	Yes	Yes	No	Yes	Yes	No	No

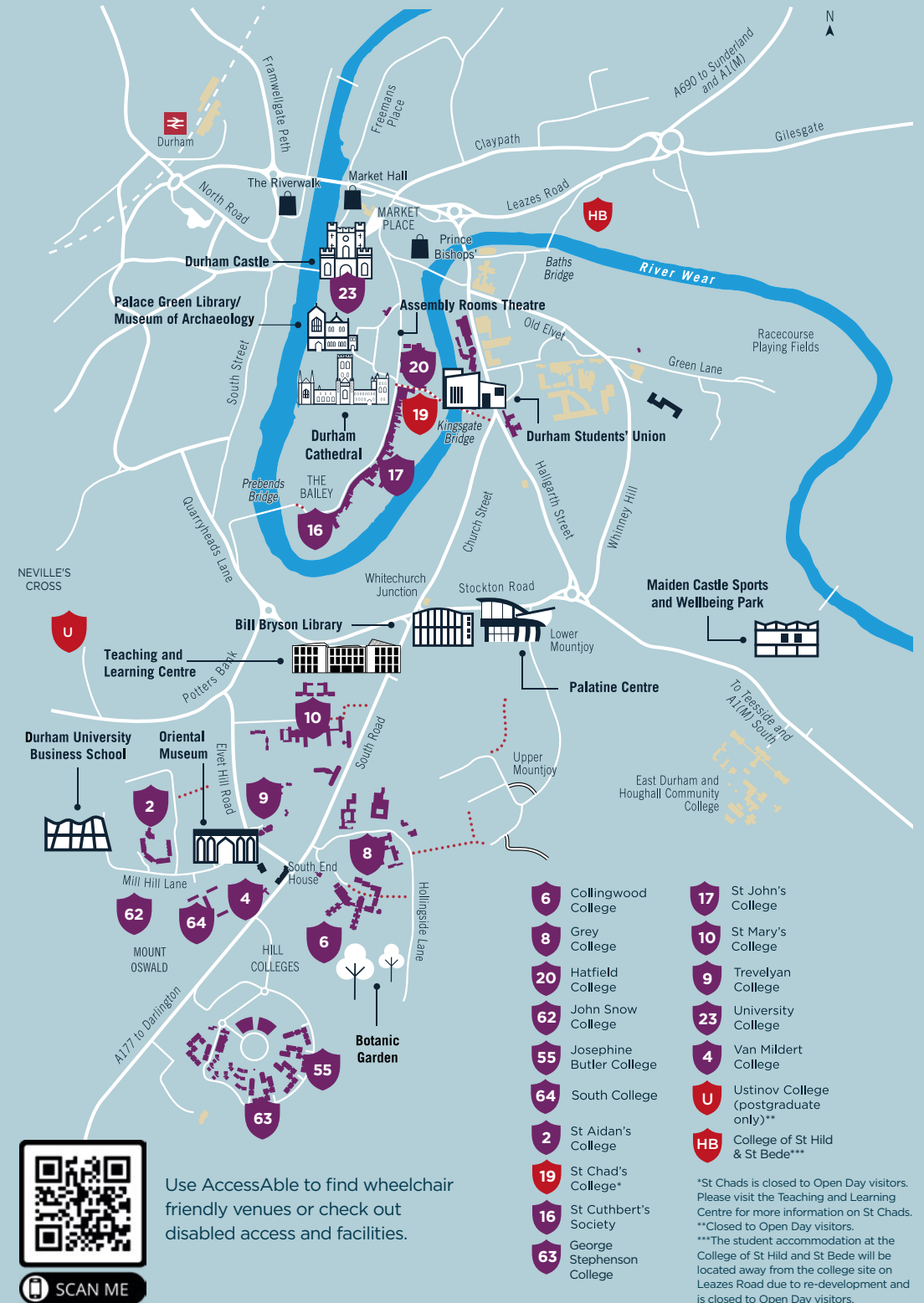
### Please note:

These figures are correct for 2022; however, they will be subject to annual change.

\*All colleges have special dinner events throughout the year called 'Formals'. Some colleges practise the long-established tradition of wearing gowns at these events. Others are less formal and do not wear gowns to dine in.

\*\*The student accommodation at the College of St Hild and St Bede will be located away from the college site on Leazes Road due to re-development. Total room numbers are yet to be confirmed.

## Open day map of colleges



- 6 Collingwood College
  - 8 Grey College
  - 20 Hatfield College
  - John Snow College
  - 62 Josephine Butler College
  - 55 South College
  - 2 St Aidan's College
  - 19 St Chad's College\*
  - 16 St Cuthbert's Society
  - 63 George Stephenson College
  - 17 St John's College
  - 10 St Mary's College
  - 9 Trevelyan College
  - 23 University College
  - 4 Van Mildert College
  - U Ustinov College (postgraduate only)\*\*
  - HB College of St Hild & St Bede\*\*\*
- \*St Chads is closed to Open Day visitors. Please visit the Teaching and Learning Centre for more information on St Chads.  
\*\*Closed to Open Day visitors.  
\*\*\*The student accommodation at the College of St Hild and St Bede will be located away from the college site on Leazes Road due to re-development and is closed to Open Day visitors.



# Catered colleges

Durham has a number of colleges where catering is provided to all students during undergraduate term time.

On a full catering package you will get breakfast, lunch and dinner provided seven days per week. We provide students with multiple options and can accommodate a wide range of dietary requirements.

Our catered colleges are located on the **Bailey/City** and on the **Hill**

*Please note: All walking times are approximate and based on an average walking speed.*

## Collingwood College **Hill**

 **Distance to Mountjoy site: 0.8km (10 mins walk)**  
**Distance to city centre: 1.9km (23 mins walk)**

Close to Durham's Botanic Garden, Collingwood is a large site with lots of outdoor space to enjoy, including a large grassy area called "The Meadow". Collingwood offers both standard bedrooms with shared bathrooms, and en-suite bedrooms. Collingwood has a wide range of facilities, for those with an interest in sports, music, the arts and media, including a theatre, media suite, gym and outdoor sports facilities. Collingwood also has a bar, coffee shop and toastie bar.




SCAN ME



Total number of students: 1565

## Grey College **Hill**

 **Distance to Mountjoy site: 0.5km (6 mins walk)**  
**Distance to city centre: 1.8km (22 mins walk)**

Grey is situated right next to the main Mountjoy site in a beautiful landscaped setting. At Grey there are a number of en-suite rooms, standard rooms and also shared bedrooms. Set across four accommodation blocks Grey offers facilities such as a bar, toastie bar and college shop, along with a multi-purpose hall and tennis court.



SCAN ME



Total number of students: 1276

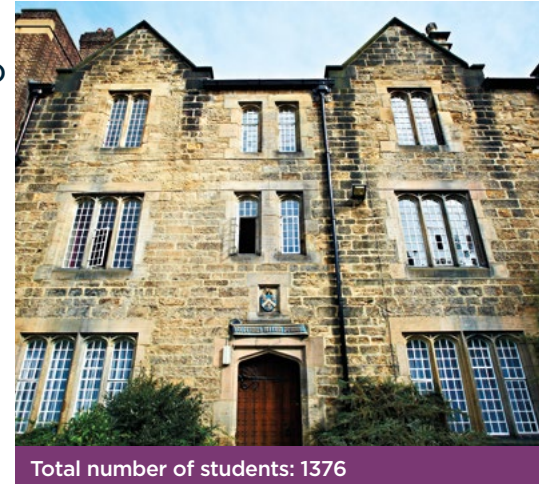
## Hatfield College **Bailey/City**

 **Distance to Mountjoy site: 0.9km (11 mins walk)**  
**Distance to city centre: 0.5km (6 mins walk)**

Hatfield is located close to the city centre and all that it has to offer. Some of Hatfield's buildings are historic, listed buildings, right on the Bailey with splendid views of the Cathedral while others are more modern and purpose-built. Accommodation comprises standard, en-suite and shared bedrooms. Facilities include a library, music room, a multi-purpose social space/bar/cafe, and meeting rooms. Hatfield also has its own Chapel, sports court, gym and boathouse for keen rowers to use.



SCAN ME



Total number of students: 1376

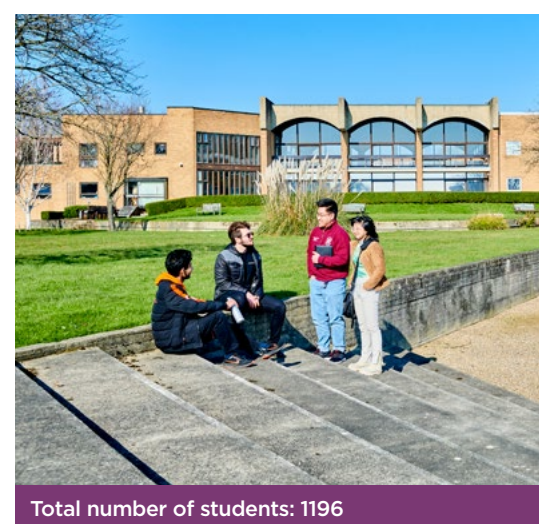
## St Aidan's College **Hill**

 **Distance to Mountjoy site: 1.1km (13 mins walk)**  
**Distance to city centre: 1.9km (23 mins walk)**

Aidan's enjoys stunning views over historic Durham City. The College is well located for all departments and is especially close to the Oriental Museum, Botanic Garden and the Durham University Business School. Aidan's has spacious gardens and landscaped grounds. Accommodation comprises standard bedrooms with shared bathroom and shared bedrooms. Facilities include a library, music room, shop, gym, bar, and multi use games area.



SCAN ME



Total number of students: 1196



## St Chad's College Bailey

 **Distance to Mountjoy site: 0.9km (11 mins walk)**  
**Distance to city centre: 0.5km (6 mins walk)**

One of the smallest colleges, St Chad's has a wide range of accommodation, all located in the historic Bailey area and close to Durham city centre and Durham's famous Cathedral. Accommodation comprises standard, en-suite and shared bedrooms. St Chad's offers facilities such as libraries, gym and large garden.



 SCAN ME

*Please note: St Chads is closed to Open Day visitors. Please visit the Teaching and Learning Centre for more information on St Chads.*



Total number of students: 549

## St John's College Bailey

 **Distance to Mountjoy site: 1.1km (13 mins walk)**  
**Distance to city centre: 0.6km (7 mins walk)**

St John's is situated within a row of Georgian townhouses on the Bailey, close to the city centre, overlooked by the famous Durham Cathedral and no more than a 13 minute walk from lectures or the Bill Bryson Library. Accommodation comprises standard, en-suite and shared bedrooms. Facilities offered include a library, music room, gym and bar. Secluded gardens and lawns stretch down to the River Wear, where St John's has its own boathouse.



 SCAN ME



Total number of students: 613

## St Mary's College Hill

 **Distance to Mountjoy site: 0.6km (7 mins walk)**  
**Distance to city centre: 1.6km (19 mins walk)**

St Mary's is situated in a great location, right next to the Mountjoy site, many academic departments, the Teaching and Learning Centre and the Bill Bryson Library. Accommodation comprises standard and en-suite bedrooms. Facilities include library, gym, outdoor sports facilities, music rooms, bar, shop and toastie bar. St Mary's has extensive grounds and provides a beautiful environment in which to live and study.



 SCAN ME



Total number of students: 892

## Trevelyan College Hill

 **Distance to Mountjoy site: 0.6km (7 mins walk)**  
**Distance to city centre: 1.8km (22 mins walk)**

Trevelyan College is a 7-minute walk from the Mountjoy site, the Bill Bryson Library and the Teaching and Learning Centre. Accommodation comprises standard and shared bedrooms. Set in beautiful grounds Trevelyan has various gardens and green spaces, as well as an outdoor all-weather sports court. Trev's has a bar and its own shop The Buttery which also offers toasties. Other facilities include a library, fitness suite, theatre and rehearsal areas.



 SCAN ME



Total number of students: 894

## Van Mildert College Hill

 **Distance to Mountjoy site: 0.6km (7 mins walk)**  
**Distance to city centre: 1.9km (23 mins walk)**

Van Mildert is close to the Mountjoy site and the Bill Bryson Library, Teaching and Learning Centre and many academic departments. Centred around a lake in spacious, leafy grounds, Van Mildert College offers a beautiful setting in which to live and study. Accommodation comprises standard and en-suite bedrooms. Facilities include a library, gym, theatre, music rooms and bar.



 SCAN ME



Total number of students: 1420



# Self-catered colleges

Explore our self-catered colleges.

In our self-catered colleges - you can cook for yourself. You'll have access to a shared kitchen and dining area with storage space for food. If you are allocated to a studio flat you will have your own private kitchen in your room.

Our self-catered colleges are located on the **Hill** in the **City** and in **Neville's Cross** to the south of the City.



## College of St Hild and St Bede\* **City**

 **Distance to Mountjoy site: 1.8km (22 mins walk)**  
**Distance to city centre: 1km (12 mins walk)**

Hild Bede is on the move. From 2022-23, whilst we redevelop our riverside home, we expect Hild Bede to be occupying a bespoke city centre location offering self-catered accommodation. We expect to have all our facilities, offices, bar, music room, social and study spaces located there and if we need any time to bring them on stream, we will ensure that all these amenities are available in some form and location. Throughout we expect to keep our boathouse on the banks of our riverside site.



 SCAN ME



Total number of students: 1336\*

\* The student accommodation at the College of St Hild and St Bede will be located away from the college site on Leazes Road, at either New Kipper Court or Ernest Place for 2022-23. These are around a 10 and 20 minute walk from Hild Bede riverside, respectively and each provide high-quality, self-catered accommodation in flats or studios. *Please note: There will be no access to Hild Bede on Open Day.*

## George Stephenson College **Hill**

 **Distance to Mountjoy site: 1.1km (13 mins walk)**  
**Distance to city centre: 2.3km (28 mins walk)**

George Stephenson College's location on the former Howlands Farm site offers a relaxing place to enjoy green surroundings yet is close to the main Mountjoy site, academic departments, the Bill Bryson Library and Teaching and Learning Centre. Accommodation comprises standard rooms, en-suite rooms and paired rooms where two bedrooms share one bathroom. Facilities include a cafe, college shop, social space, music room, gym and outdoor sports area.



 SCAN ME



Total number of students: 898

## John Snow College **Hill**

 **Distance to Mountjoy site: 1.4km (17 mins walk)**  
**Distance to city centre: 2.6km (31 mins walk)**

John Snow College is located at Mount Oswald, as one of the Hill colleges, and just a short walk from many of the academic departments, the Durham University Business School and the Bill Bryson Library. The Teaching and Learning Centre and Botanic Garden are also nearby. Accommodation comprises standard and en-suite rooms. As well as the usual facilities including a bar and cafe, John Snow also has a yoga studio, performance space and an outdoor multi use games area.



 SCAN ME

Total number of students: 708



## Josephine Butler College **Hill**

 **Distance to Mountjoy site: 1.1km (13 mins walk)**  
**Distance to city centre: 2.2km (26 mins walk)**

Situated at the top of the hill, Josephine Butler is close to the Botanic Garden, Oriental Museum and the Durham University Business School. It is also close to the Mountjoy site, with many academic departments, the Bill Bryson Library and Teaching and Learning Centre located there. All of Josephine Butler's accommodation is en-suite, with a shower, sink and toilet provided. Facilities at Josephine Butler include a bar, gym, music and art rooms as well as outdoor sports facilities.



 SCAN ME



Total number of students: 1315



## South College Hill

 **Distance to Mountjoy site: 1.4km (17 mins walk)**  
**Distance to city centre: 2.6km (31 mins walk)**

South College, Durham's newest college, is located in modern facilities close to Durham University Business School and the many departments located on the Mountjoy site. South College is only a short walk from the Botanic Garden, the Bill Bryson Library and the Teaching and Learning Centre. Accommodation comprises standard and en-suite rooms. As well as the usual facilities South College has a gym, multi use games area, a yoga and dance studio, cafe bar and drama studio.



SCAN ME



Total number of students: 1023

## Ustinov College Neville's Cross (Postgraduate only)

 **Distance to Mountjoy site: 1.6km (19 mins walk)**  
**Distance to city centre: 1.6km (19 mins walk)**

Sheraton Park and Dryburn Court are the two Ustinov College sites, solely for postgraduates. Sheraton Park is located on the west side of Durham City, approximately 1.6km from the city centre and a 19 minute walk from University facilities. Accommodation comprises single en-suite rooms with a shared kitchen, studios with a private kitchen designed for couples and premium paired rooms, where two private single rooms share a small kitchenette and en-suite.



SCAN ME



Total number of students: 1322

Dryburn Court is closer to the city centre and contains one, two, and three-bedroom flats for couples and for families with children.

Facilities across the sites include a cafe, bar, study spaces, a gym and outdoor playground.

## Mixed-catered colleges

Some of our colleges offer a self-catered, catered or part-catered option, dependent on which accommodation you choose to live in.

Our colleges with mixed catering options are located on the Bailey/City

*Please note: All walking times are approximate and based on an average walking speed.*

## St Cuthbert's Society Bailey/City

 **Distance to Mountjoy site: 1km (12 mins walk)**  
**Distance to city centre: 0.8km (10 mins walk)**

St Cuthbert's occupies two sites, with rooms and gardens on the historic Bailey in the heart of Durham, close to the city centre and Durham's famous Cathedral, and self-catered, modern flats across the river at Parson's Field. St Cuthberts offers a choice of fully-catered, self-catered and part-catered options, including pay-as-you-go and a meals package, depending on accommodation chosen. Accommodation comprises standard, shared and en-suite rooms. Facilities include a library and music room, two bars, two gyms, a boathouse and outdoor sports area.



SCAN ME



Total number of students: 1411

## University College (Castle) Bailey/City

 **Distance to Mountjoy site: 1.1km (13 mins walk)**  
**Distance to city centre: 0.3km (4 mins walk)**

Based in our magnificent Castle building, and in an excellent city centre location on Palace Green, opposite Durham's famous Cathedral, University College is only a minute away from the city's shops and restaurants and a short walk to departments and lecture venues. University College offers catered and self-catered accommodation for undergraduates, dependent on location and self-catered accommodation for postgraduates. Accommodation comprises standard, shared or en-suite rooms. Facilities include a library, music rooms, a gym and the Undercroft bar.



SCAN ME



Total number of students: 1313





## College tours on Open Day

All of our colleges, except St Chad's College, the College of St Hild and St Bede and Ustinov, are open and available for you to drop in during the Undergraduate Open Day, however you may have to queue for your tour! St Chad's College will be represented in the Colleges Hub on the top floor of the Teaching and Learning Centre, along with our Residential Student Services, so why not pop along to find out more about our fantastic Colleges.



## Accommodation charges

Accommodation charges vary depending on a number of factors such as type of room, catering options and length of let.



Find out  
more about  
accommodation  
costs

*Please note: Accommodation charges are set each October for the following academic year.*

Durham University  
The Palatine Centre  
Stockton Road  
Durham DH1 3LE  
UK

### Enquiries

T: +44 (0)191 334 1000

W: [durham.ac.uk/study/askus](https://durham.ac.uk/study/askus)

### Main switchboard

T: +44 (0)191 334 2000

[durham.ac.uk/experience](https://durham.ac.uk/experience)

## How to apply

### How do I become a member of a college?

As a Durham University student, you automatically become a member of a college.



Find out  
more about  
how to apply

For undergraduates, you will be able to rank our colleges in order of preference once you have been made an offer.

For postgraduates, you will be contacted directly by the Accommodation and Allocations Office to express college preferences once you accept your postgraduate offer.